



Pacifitech

# ADVANCED STOCK TAKE

**ADVANCED STOCK TAKE (PHYSICAL INVENTORY COUNT) PROVIDES A NEW DOCUMENT TYPE WITHIN SAGE 300, MAKING THE STOCK TAKE PROCESS MORE EFFICIENT AND MANAGEABLE WITH A CLEAR AUDIT TRAIL.**

## Sage 300

Advanced Stock Take replaces the standard Sage 300 Physical Inventory with new programs including a Stock Take Document that improves the ease of use, productivity and functionality - plus introduces important controls and auditability to the Stock Take process.

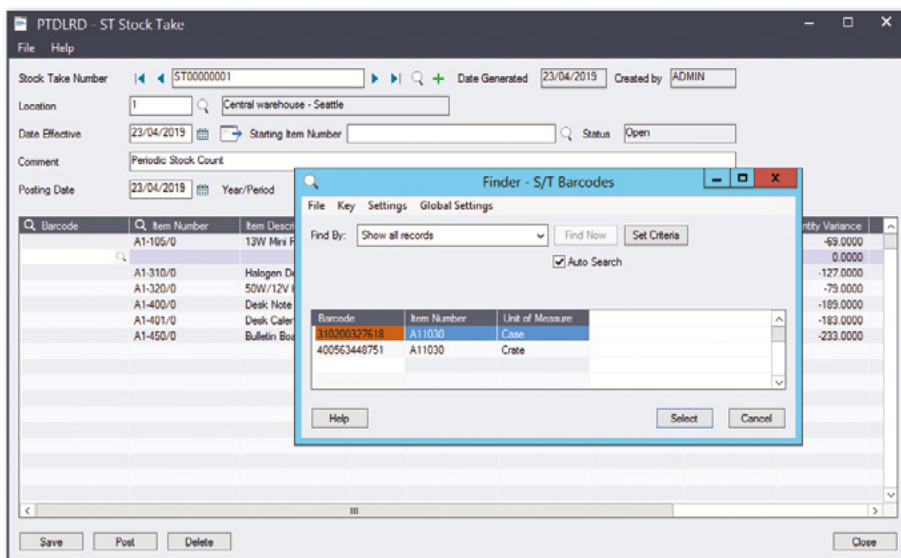
Posting variances continues to produce IC Adjustments, but now with a proper Document design. The unique Stock Take Number makes for an easy reference back to the originating Stock Take Worksheet.

### Concurrent Stock Takes per Location

In more complex inventory stores, Advanced Stock Take provides the ability to have multiple Stock Take documents open simultaneously for the same Inventory Location.

### Main Benefits

- » Review Stock Take history; every Stock Take transaction is recorded indefinitely
- » Set a default Stock Take Unit
- » Perform a Stock Take in different UOM's for a single item, and have this persisted as it was counted in the Stock Take document
- » Barcodes can be recorded against the various units for each item thus allowing scanner based utilities on various units
- » Configurable Stock Take Number, the prefix and the length as standard Sage 300 behavior
- » Create an ad hoc Stock Take Document, no requirement to generate the worksheet as a preparatory step
- » Add new or missing items to an existing Stock Take worksheet



BUILDING ON  
BUSINESS  
PERFORMANCE



Pacifitech

## Security & Auditability

A proper security model can be applied which defines the following roles:-

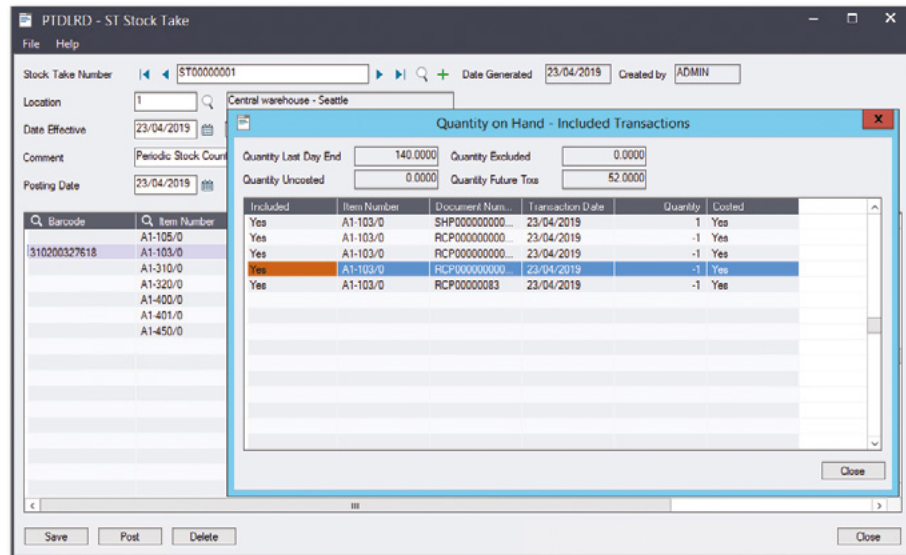
- » Setup Maintenance
- » Item & Barcode Maintenance
- » Stock Take Entry
- » Stock Take Posting
- » Stock Take Reporting

All aspects of the Stock Take process are audited with the various contributors detailed in the reporting.

## Date Based SOH Generation

Advanced Stock Take has the ability to generate SOH values at any retrospective date.

Given that IC operates at an increment of a day, Advanced Stock Take will present the operator with the transactions of that day to select which are included or not included to balance the inventory.



Example of Document Selection based on Effective Date

## AVAILABILITY & SYSTEM REQUIREMENTS

300 Editions:

**Standard, Advanced and Premium**

Databases:

**Microsoft SQL Server**



Pacifitech has a long and successful history as a Sage ISV Development Partner, developing Sage 300 solutions that enhance the functionality and capability of Sage 300.

Pacifitech is a Sage Intacct MPP and is developing innovative solutions for Sage Intacct.

Visit our website [www.pacifitechsol.com](http://www.pacifitechsol.com) for further information on products and services that Pacifitech provides to the Sage communities around the world.

## Sage Tech Partner

**Top Development Partner** – Sage Australia/Pacific 2021

**Top Development Partner** – Sage Australia/Pacific 2020

**Top Subscription Revenue** – Sage Australia/Pacific 2015

**Top Development Partner** – Sage Australia/Pacific 2014

**Sage Global Development Partner of the Year** – 2009

**Top Development Partner** – Sage Asia 2008