

Pacifictch AUDIT LOGGER

AUDIT LOGGER FOR SAGE 300 PROVIDES ORGANIZATIONS WITH AN AUDITING TOOL THAT REGISTERS USER ACTIONS, SECURITY ALTERATIONS & DATA MODIFICATIONS. AUDIT LOGGER FOR SAGE 300 IS AN ESSENTIAL COMPONENT TO DELIVER A COMPLETE INTERNAL CONTROL SOLUTION.

Sage 300

Audit Logger captures a register of user actions performed against each specific view that can be later analysed and reported on. It also captures other user actions performed in Sage 300 such as security settings, batch posting & clearing history.

Audit Logger records all changes to unlimited optional fields as a single transaction along with the primary view inserts, changes and deletions. Administrators can easily define which optional fields require auditing for each view.

Audit Logger operates seamlessly within the Sage 300 environment; many of the product features are simply not achievable with external database level auditing products.

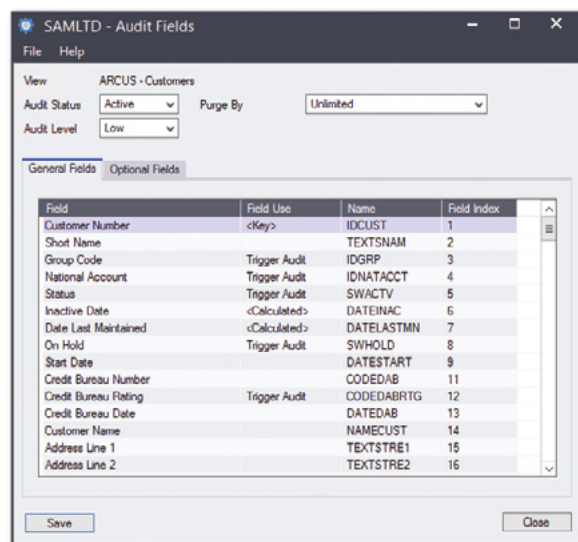
Easy Configuration

An administrator can tailor each individual view, setting the views audited fields and the views audited optional fields to meet their specific requirements.

Alternatively an administrator can quickly use the predefined minimum & maximum setting that can be applied by module or by view.

A finalised configuration can be exported and quickly imported into many companies to reduce the configuration time and ensure consistency in a multi-entity deployment.

The auditing of Inventory Control, Purchase Orders & Order Entry modules is enhanced to include the Lot Tracking & Serialized Inventory functionality that is now fundamental to the distribution modules.



Main Features

- » Captures both before and after details of the audited fields
- » For user actions, logs the parameters and values the processing view was called with
- » Logs authenticated Windows user name, login domain and IP address from the workstation where the change occurred
- » Ignores statistical updates performed by internal posting procedures, a significant performance design feature
- » Dynamically handle module upgrades
- » Supports all Sage 300 databases
- » Audit data held in Sage 300 database for absolute integrity if a company is restored or copied

**BUILDING ON
BUSINESS
PERFORMANCE**



Pacifictch

Reporting

Reporting can be filtered by view, user or date range and can be limited to just fields that have been changed in the audit.

Audit data can also be exported using standard Sage 300 export functionality, then mined using Excel or Access or more sophisticated applications of the customer's preference.

Sample Company Limited				Page 1
Date: 16/04/2019 11:57:42a.m. Audit Log Report(AURPT)				
User ID:	[All]			
Module:	[All]			
Audit Date:	[] to [31/12/9999]			
Operations:	[Updates, Insertions, Deletions, Processes]			
Change Only:	Yes			
AUIVIEW, View Audit Settings				
Timestamp:	16/04/2019 11:53:52a.m.	IP Address:	172.16.2.180	Audit Seq: 1
User:	ADMIN, Administrator	Network User:	PSTDOMAIN\jennifer	
AR0024				
<Key> VIEWID	Audit View ID			
WVLLNAME	Audit View Name		ARCUS	
WVDESC	Audit View Description		Customers	
AUDITLEVEL	Audit Level		<1> Low	
ARCUS, Customers				
Timestamp:	16/04/2019 11:56:07a.m.	IP Address:	172.16.2.180	Audit Seq: 2
User:	ADMIN, Administrator	Network User:	PSTDOMAIN\jennifer	
1100				
<Key> IDCUST	Customer Number			
PCTSASPLT1	Sales-Split Percentage 1	50.00000	45.00000	
PCTSASPLT2	Sales-Split Percentage 2	50.00000	55.00000	
AUIVIEW, View Audit Settings				
Timestamp:	16/04/2019 11:56:58a.m.	IP Address:	172.16.2.180	Audit Seq: 3
User:	ADMIN, Administrator	Network User:	PSTDOMAIN\jennifer	
AP0015				
<Key> VIEWID	Audit View ID			
WVLLNAME	Audit View Name		APVEN	
WVDESC	Audit View Description		Vendors	
AUDITLEVEL	Audit Level		<1> Low	
APVEN, Vendors				
Timestamp:	16/04/2019 11:57:31a.m.	IP Address:	172.16.2.180	Audit Seq: 4
User:	ADMIN, Administrator	Network User:	PSTDOMAIN\jennifer	
1200				
<Key> VENDORID	Vendor Number			
AMTCRLMT	Credit Limit	5000.000	100000.000	

Sample report from Audit Logger

AVAILABILITY & SYSTEM REQUIREMENTS

300 Editions:
Standard, Advanced and Premium

Databases:
Microsoft SQL Server

Languages:
English, Spanish, French, Simplified Chinese

Audited Modules:

- + SM, AS, CS, BK, TX
- + GL SETUP + TRANSACTIONS
- + AR SETUP + TRANSACTIONS
- + AP SETUP + TRANSACTIONS
- + IC SETUP + TRANSACTIONS
- + OE SETUP + TRANSACTIONS
- + PO SETUP + TRANSACTIONS
- + PJC SETUP + TRANSACTIONS
- + US & CANADIAN PAYROLLS



Pacifitech has a long and successful history as a Sage ISV Development Partner, developing Sage 300 solutions that enhance the functionality and capability of Sage 300.

Pacifitech is a Sage Intacct MPP and is developing innovative solutions for Sage Intacct.

Visit our website www.pacifitechsol.com for further information on products and services that Pacifitech provides to the Sage communities around the world.

Sage Tech Partner

- Top Development Partner** – Sage Australia/Pacific 2021
- Top Development Partner** – Sage Australia/Pacific 2020
- Top Subscription Revenue** – Sage Australia/Pacific 2015
- Top Development Partner** – Sage Australia/Pacific 2014
- Sage Global Development Partner of the Year** – 2009
- Top Development Partner** – Sage Asia 2008