



Pacifitech

DOCUMENT PROCESSING SERVICE

THE DOCUMENT PROCESSING SERVICE (DPS) PROVIDED BY PACIFITECH IS A THIRD GENERATION, COST-EFFECTIVE DATA EXTRACTION SOLUTION (OCR) FOR SAGE 300. THE USE OF MACHINE LEARNING TECHNOLOGY MAKES THE SOLUTION MORE EFFECTIVE & EFFICIENT FOR ACCOUNTS PAYABLE (AP) USERS.

Sage 300

Data Extraction (OCR)

Invoices submitted into the DPS Connected Service arrive in DPS Console inside Sage 300 within 5 minutes, ready for AP to review them and make any changes necessary before they are submitted into the approval workflow (for vendors that have been trained).

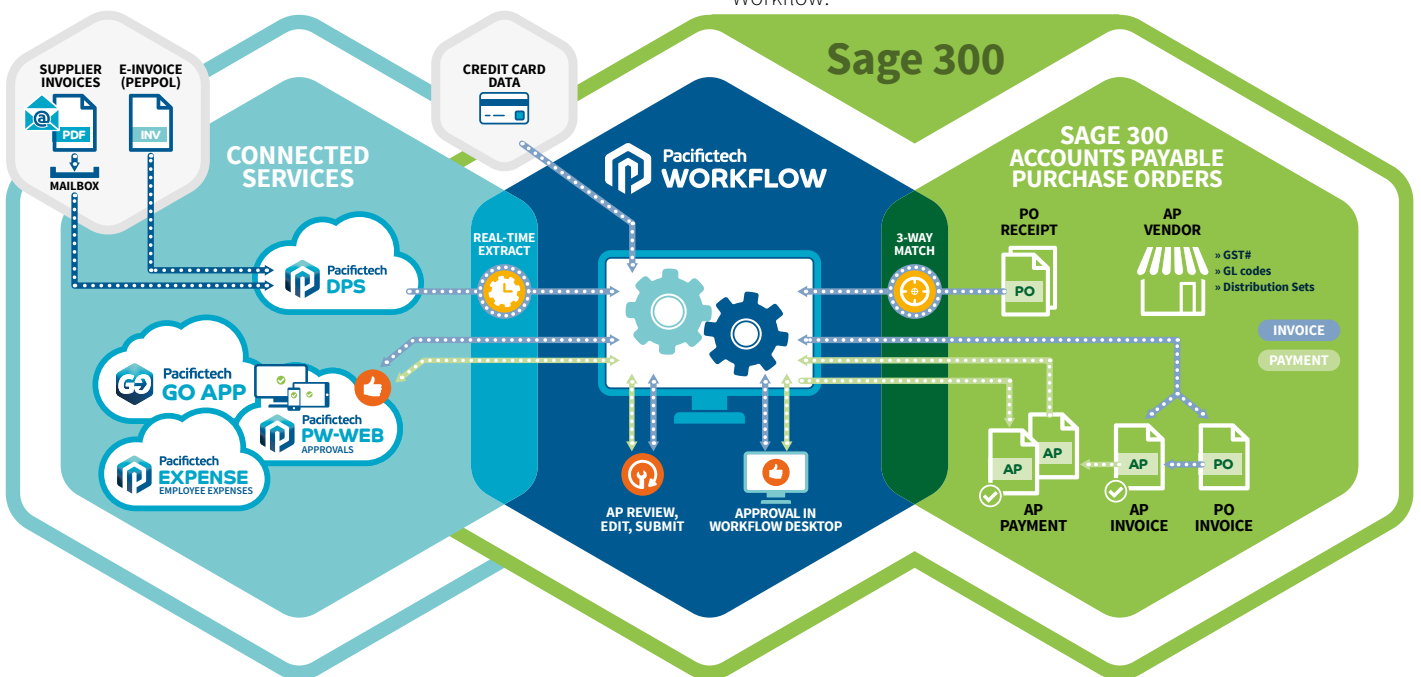
AI training of DPS is carried out on 5 invoices for each vendor – this function is done by AP staff i.e. it does not require a consultant to do this.

Tightly Integrated with Sage 300

Vendor settings from AP for taxes and default GL codes are utilized by DPS.

As part of the Leading AP Automation Solution

Payables Workflow in the Sage 300 desktop provides “paperless AP”, and can deliver savings of up to 50% of the AP function. DPS provides another level of efficiency gain over and above Payables Workflow.



BUILDING ON
BUSINESS
PERFORMANCE



Pacifitech



Pacifitech DOCUMENT PROCESSING SERVICE

Third Generation Technology Including Machine Learning

The advanced technology included in DPS is a leap ahead from the approach used by second generation OCR systems, where the system looks in a specific location for a field. With DPS if the field is moved to a different location on the invoice, the data continues to be extracted successfully.

Web Approvals

If Pacifitech's PW-Web Connected Service is also enabled, supplier invoices can be approved from a web browser including on a smartphone. This approach enables approvals to interact with Sage 300 data without needing to log in to Sage 300.

Technical Design

DPS is the second Pacifitech Connected Service that leverages the power of the Pacifitech Workflow solutions and Sage 300.

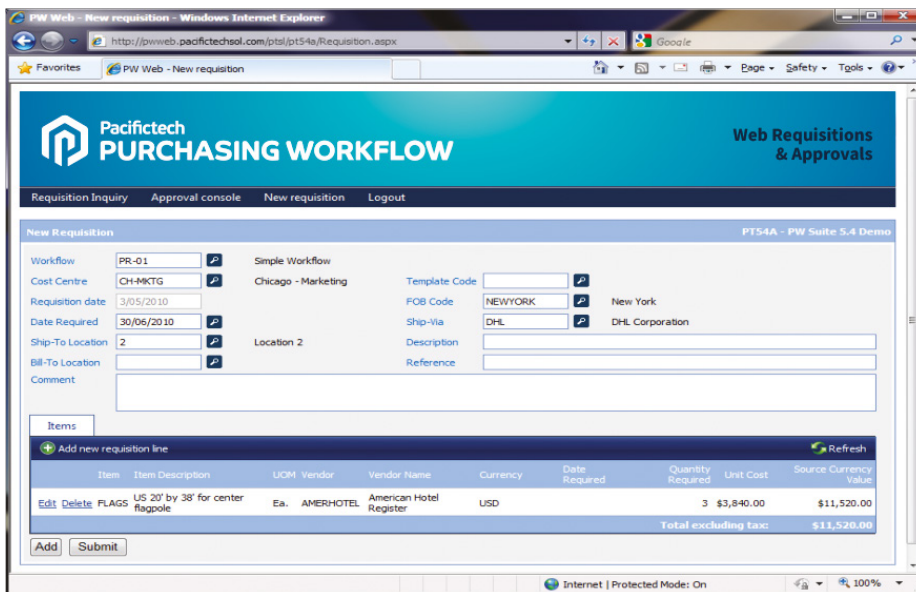
Pacifitech provides the Connected Service which communicates with the customers "on-premises" implementation of Sage 300 via web services.

SYSTEM REQUIREMENTS

The on-premise installation must be operating Sage 300, with the Payables Workflow product being activated and properly implemented.

The PA-DPS Web Service must be accessible to the Pacifitech Web Infrastructure via the Internet. A document covering security information is available upon request.

Browser Support:
All modern Browsers



Business Model

DPS is charged on a subscription basis based on volume tiers. The per transaction charge reduces for higher volumes.

A service contract is mandatory between the customer and Pacifitech as the service provider.



Pacifitech has a long and successful history as a Sage ISV Development Partner, developing Sage 300 solutions that enhance the functionality and capability of Sage 300.

Pacifitech is a Sage Intacct MPP and is developing innovative solutions for Sage Intacct.

Visit our website www.pacifitechsol.com for further information on products and services that Pacifitech provides to the Sage communities around the world.

Sage Tech Partner

Highest Total Rev. Tech Partner – Sage Africa & ME 2022

Top Development Partner – Sage Australia/Pacific 2021

Top Development Partner – Sage Australia/Pacific 2020

Top Subscription Revenue – Sage Australia/Pacific 2015

Top Development Partner – Sage Australia/Pacific 2014

Sage Global Development Partner of the Year – 2009

Top Development Partner – Sage Asia 2008