



Pacifictch INTERNAL ISSUES

INTERNAL ISSUES FOR SAGE 300 PROVIDES AN EASY-TO-USE FACILITY TO ISSUE INVENTORY FROM A CENTRAL STORE TO A COST CENTER WITHIN THE COMPANY, THIS TRANSACTION DEPLETES INVENTORY AND CHARGES THE INVENTORY COST TO THE APPROPRIATE GL EXPENSE ACCOUNTS FOR THE COST CENTER.

Sage 300

Internal Issues provides a valuable function for organizations that distribute and consume inventory and/or services internally.

Multiple Shipment transactions can be raised against an Internal Issue Order and Shipments can be created without having to first create an Order document.

The posting of an Internal Issue Shipment transaction creates an IC Adjustment that appropriately expenses the inventory cost through to the receiving Cost Center.

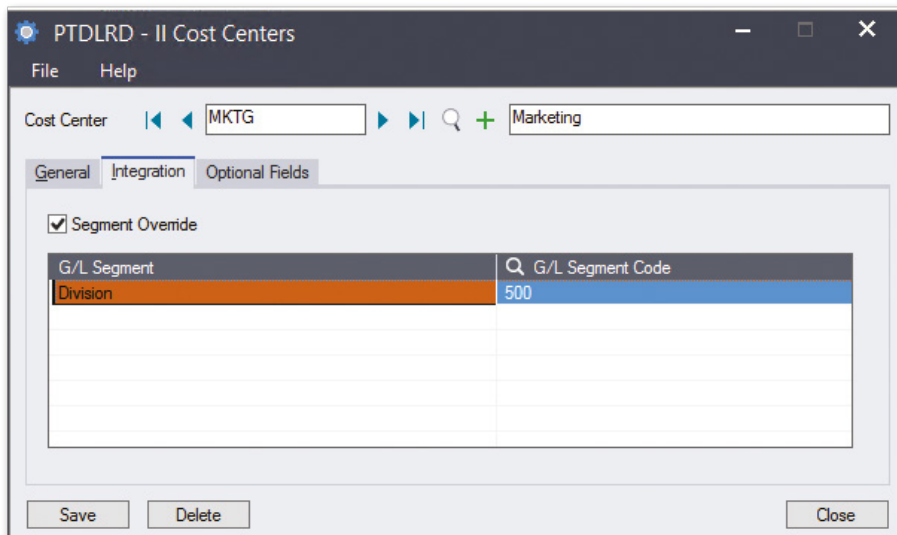
Cost Centers

Cost Centers are a key concept provided within Internal Issues; inventory or services are issued to a Cost Centre, the Cost Centre determines the appropriate GL expense code to use when inventory is shipped.

- » Each Cost Centre has a GL Override facility
- » Each Item Category has a base GL account assigned to it
- » The Cost Centre GL override is performed on the base account to provide the final GL account

Main Features

- » Internal Issue transactions can be posted to a single or multiple cost centers
- » GL accounts determined by a base Expense account set by Category, with a Cost Centre override
- » Supports multiple units of measures
- » Supports the following costing methods: average, standard, most recent and user-specified
- » Transactions can be entered and saved, and retrieved later for changes prior to posting
- » Internal Issue Order form for picking of items
- » Internal Issue Shipment form for shipping items to the receiving department
- » Full support for Sage 300 Unlimited Optional Fields
- » Internal Issue Returns allow users to return items that were originally issued on a shipment transaction to a Cost Centre
- » Full support to issue Non-stock Items, a great solution to internally charge consulting, IT or any other service to Cost Centers
- » A security group that provides the ability to alter the issuing IC Location on the Internal Issue Order document.



**BUILDING ON
BUSINESS
PERFORMANCE**



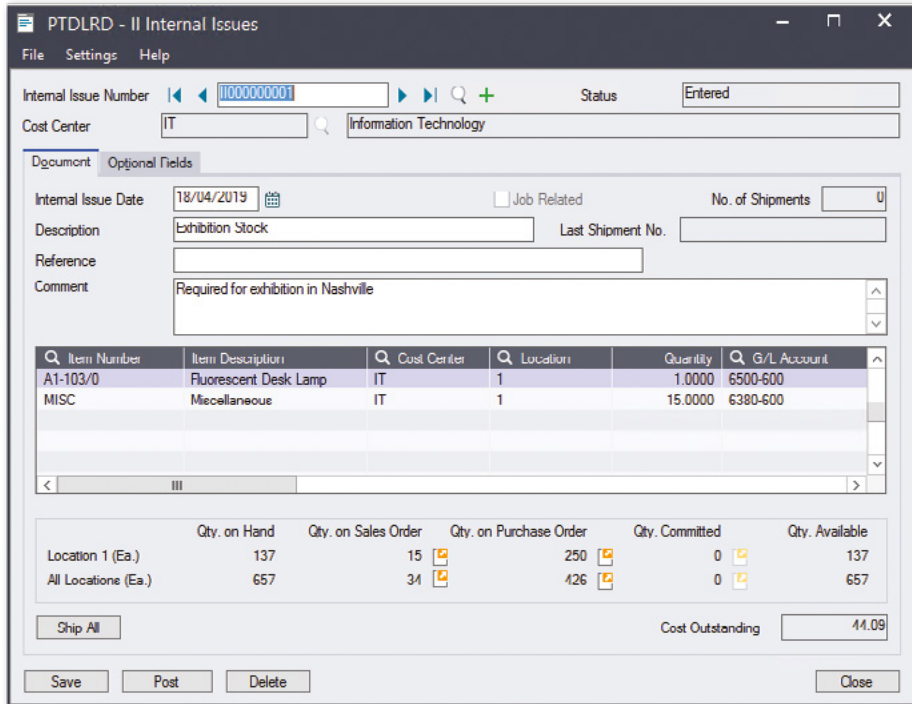
Pacifictch

Integrated with Purchasing Workflow

When used with Purchasing Workflow, Internal Issues transactions can be created (for stocked items) once a requisition has been fully approved – either manually or by the workflow engine.

Integrated with PJC

Internal Issues has full support for the Accpac PJC module. Job related transactions ultimately result in a PJC Material Usage transaction once they are shipped.



Item Number	Item Description	Cust. Center	Location	Quantity	G/L Account
A1-103/0	Fluorescent Desk Lamp	IT	1	1.0000	6500-600
MISC	Miscellaneous	IT	1	15.0000	6380-600

	Qty. on Hand	Qty. on Sales Order	Qty. on Purchase Order	Qty. Committed	Qty. Available
Location 1 (Ea.)	137	15	250	0	137
All Locations (Ea.)	657	34	426	0	657

Example screenshot of Internal Issues

AVAILABILITY & SYSTEM REQUIREMENTS

300 Editions:

Standard, Advanced and Premium

Databases:

Microsoft SQL Server

Languages:

English, Spanish, French, Simplified Chinese

Required Modules:

- + **GENERAL LEDGER**
- + **INVENTORY CONTROL**

Integrated Modules (Optional):

- + **PROJECT & JOB COSTING**
- + **PURCHASING WORKFLOW**
- + **FUNDS AVAILABILITY**



Pacifitech has a long and successful history as a Sage ISV Development Partner, developing Sage 300 solutions that enhance the functionality and capability of Sage 300.

Pacifitech is a Sage Intacct MPP and is developing innovative solutions for Sage Intacct.

Visit our website www.pacifitechsol.com for further information on products and services that Pacifitech provides to the Sage communities around the world.

Sage Tech Partner

Top Development Partner – Sage Australia/Pacific 2021

Top Development Partner – Sage Australia/Pacific 2020

Top Subscription Revenue – Sage Australia/Pacific 2015

Top Development Partner – Sage Australia/Pacific 2014

Sage Global Development Partner of the Year – 2009

Top Development Partner – Sage Asia 2008