



# Pacifctech VENDOR CATALOGS

**VENDOR CATALOGS STORES ADVANCED INFORMATION TO ALLOW THE ACCURATE CALCULATION OF PRICING FROM SOPHISTICATED BUYING AGREEMENTS. WITH THIS ABILITY AND MANY OTHER OPTIONS AND SETTINGS IN THE CATALOG, PURCHASING WORKFLOW CAN MAKE POWERFUL PURCHASING SUGGESTIONS.**

## Sage 300

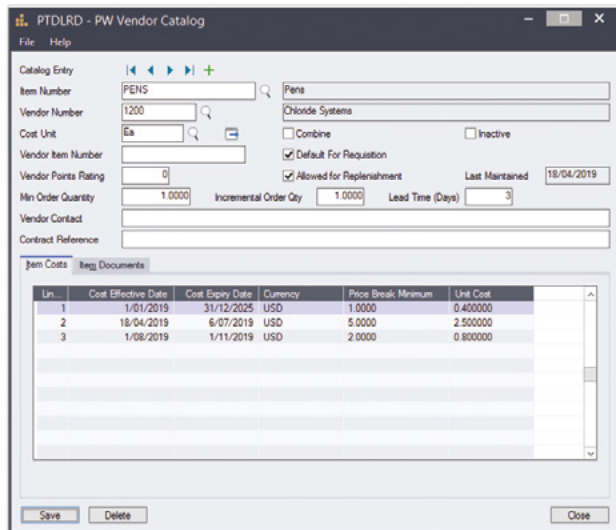
The Vendor Catalog holds a rich matrix of vendor specific details that can be recorded against each inventory item.

Purchasing Workflow utilizes these setting to improve its ability to automate and optimize the requisition interface and inventory re-ordering processes.

### Catalog Import Helper

Vendor Catalogs provides an easy to use import facility which allows vendors to supply a single flat file that represents their catalog.

This is first imported to a staging table and validated; any problems with the input data are clearly identified. Finally this data is processed updating information in both Inventory Control and the Vendor Catalog.



### Lowest Cost Vendor

Purchasing Workflow is able to default the lowest cost vendor at the time of requisition entry.

Purchasing staff and Cost Center managers in the workflow process are capable (if the configuration allows) of reviewing the vendor selection and to modify where they feel an improved approach could gain a cost benefit:

- » Purchasing in an alternative unit of measure
- » Purchasing a higher quantity to achieve discounts, or
- » A purchasing delay to access new pricing effective dates
- » A different vendor

### Main Features

- » Start and end dates for vendor prices
- » Manufacturing / delivery lead-times
- » Quantity breaks for reduced purchase prices
- » Default vendor flag
- » Minimum order quantities
- » Incremental order quantities
- » Vendor item number

**BUILDING ON  
BUSINESS  
PERFORMANCE**



Pacifctech

## Vendor Item Documents

Images or any file can be associated with each vendor item; there is no limit on the number of images for each vendor item.

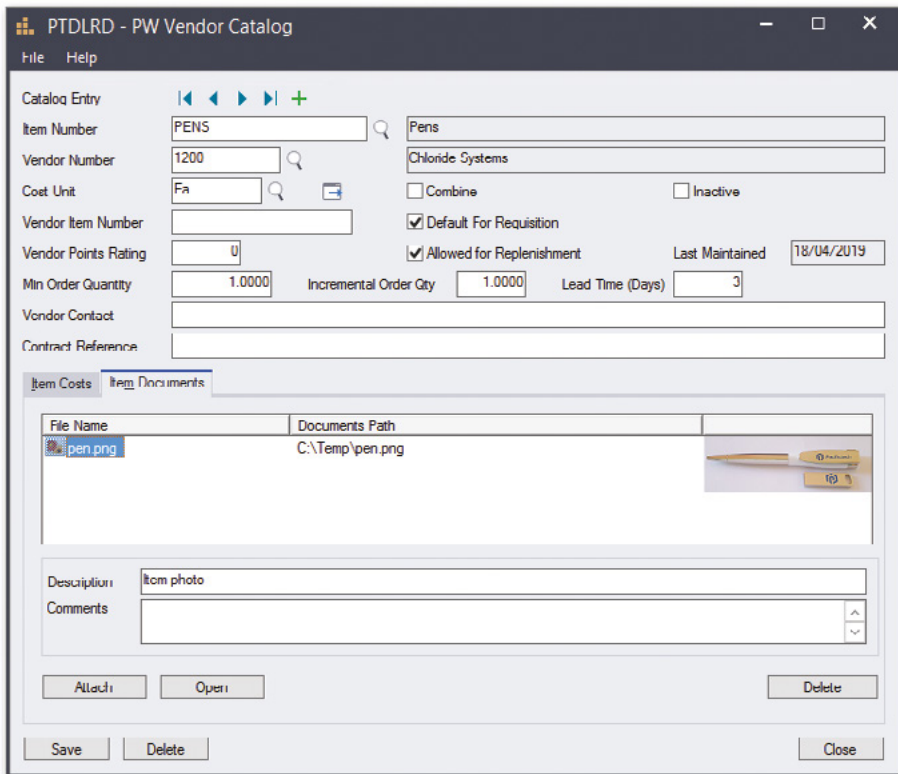
Users are able to view vendor item images or other manufacturer's specifications or internal documentation during requisition data entry to validate correct item or ordering procedures.

## AVAILABILITY & SYSTEM REQUIREMENTS

300 Editions:  
**Standard, Advanced and Premium**

Databases:  
**Microsoft SQL Server**

Required Modules:  
**+ PURCHASING WORKFLOW**



Sample of Vendor Catalog



Pacifitech has a long and successful history as a Sage ISV Development Partner, developing Sage 300 solutions that enhance the functionality and capability of Sage 300.

Pacifitech is a Sage Intacct MPP and is developing innovative solutions for Sage Intacct.

Visit our website [www.pacifitechsol.com](http://www.pacifitechsol.com) for further information on products and services that Pacifitech provides to the Sage communities around the world.

## Sage Tech Partner

- Top Development Partner** – Sage Australia/Pacific 2021
- Top Development Partner** – Sage Australia/Pacific 2020
- Top Subscription Revenue** – Sage Australia/Pacific 2015
- Top Development Partner** – Sage Australia/Pacific 2014
- Sage Global Development Partner of the Year** – 2009
- Top Development Partner** – Sage Asia 2008